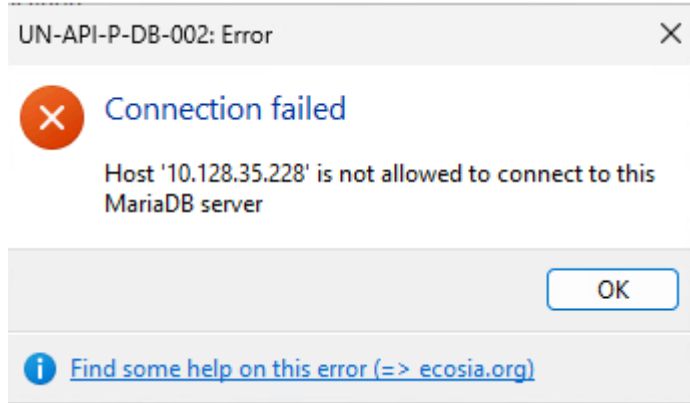


Cannot connect to the server with HeidiSQL

Categories: Known Issue · Topics: Databases · Context: ESB · Exported: 2026-04-18 00:52

Issue

Cannot connect to the server with HeidiSQL



Solution

Connect with SSH to the server.

Connect to MySQL using:

```
mysql -uroot -pmyAdmin1! --socket=/var/lib/mysql/mysql.sock
```

Allow connection with inthubadmin account for the IP of the new VDI:

```
GRANT ALL PRIVILEGES ON *.* TO 'inthubadmin'@'10.128.%' IDENTIFIED BY PA
```

```
FLUSH PRIVILEGES;
```